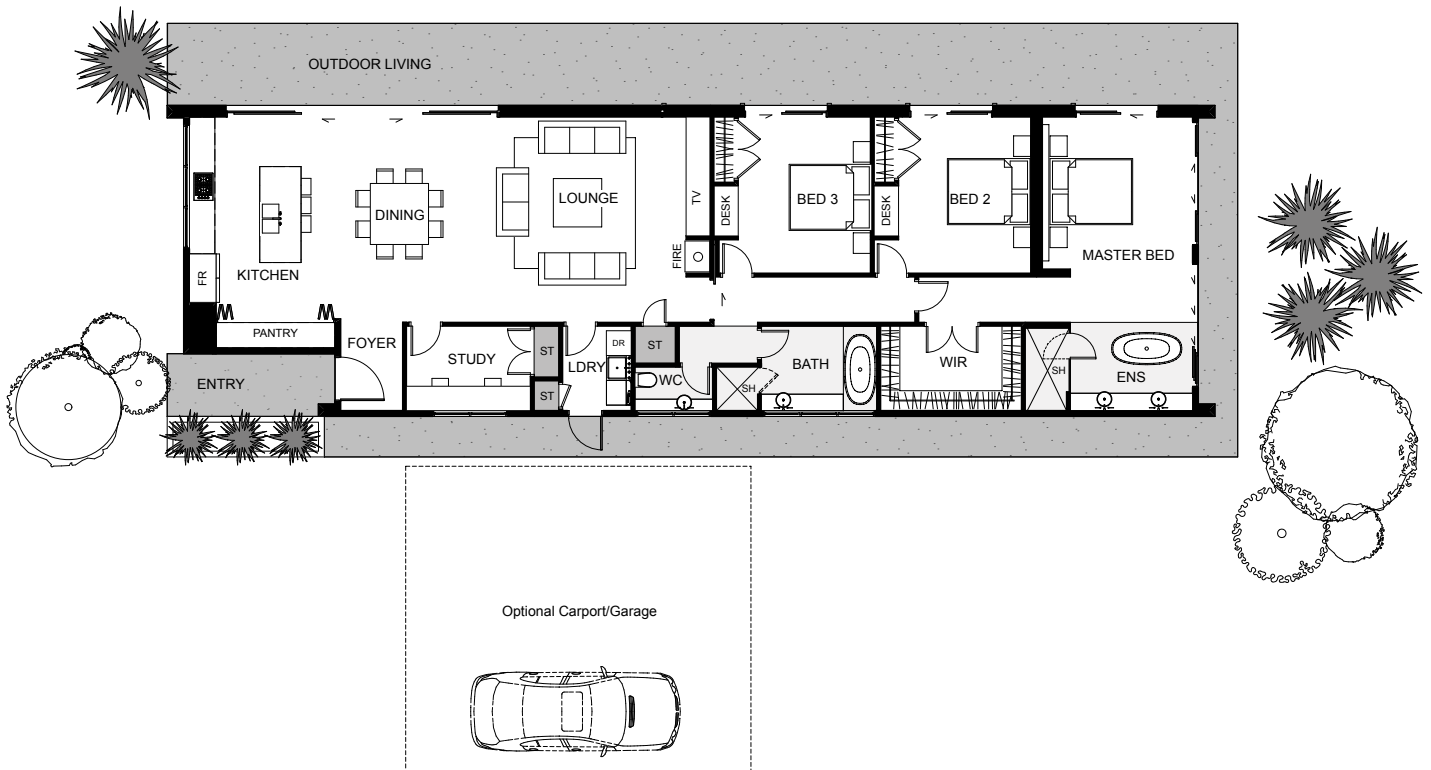








The Orton is a spacious three bedroom home with a smart layout. An elegantly designed master bedroom tucked away at the far end of the house offers a peaceful oasis that features a large walk in wardrobe and luxurious open ensuite. The living space combines an open plan kitchen, lounge and dining that seamlessly opens through to the outdoor living, extending the living and entertaining area beautifully. This stylish home has ample storage throughout to make everyday living a breeze and with the living space cleverly separated from the sleeping area's it makes this home particularly ideal for families with younger children. The Orton is a home that delivers practical, flexible living for all.



Floor Area: 180m²

 2
  3
  2
  25.3m
  7.5m

ph: (09) 818 2921
Email: info@wah.co.nz
www.wah.co.nz



WALKER ADOLPH HOMES