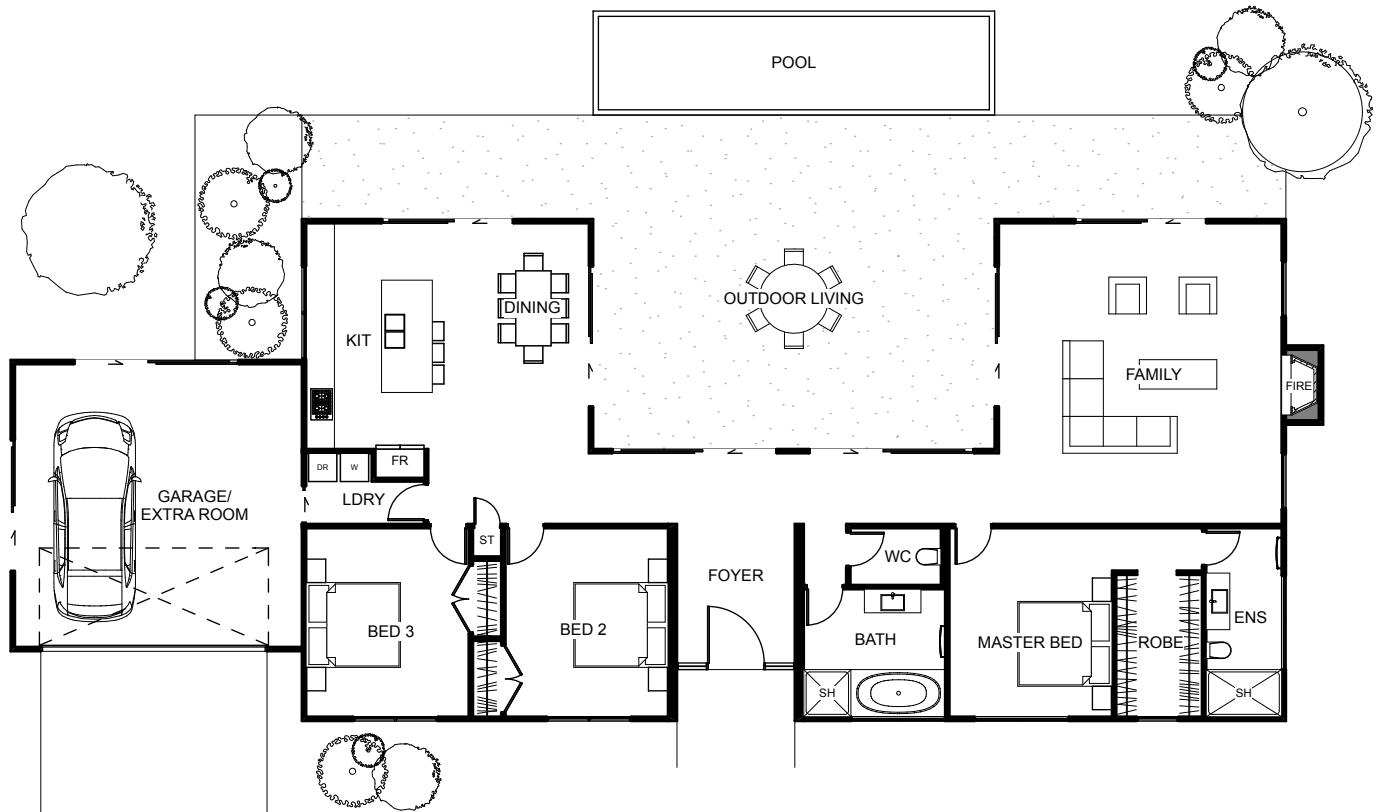




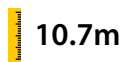




The Evatt is a three bedroom home designed for simple family living. The master bedroom is complete with an ensuite and walk in robe. This home has a well appointed open planned kitchen and dining space on one side with the living area located at the opposite end of the home, both opening out onto the outdoor living hub, creating a seamless indoor-outdoor flow, ideal for casual entertaining and relaxation. The Evatt gives ample personal and entertaining space for everyone to enjoy.



Floor Area: 218m²

 2
  3
  2
  27.8m
  10.7m

ph: (09) 818 2921
Email: info@wah.co.nz
www.wah.co.nz



WALKER ADOLPH HOMES